

## Mosquitoes in your garden?

We need your help!

**Do you have a water butt or wildlife pond in your garden?**

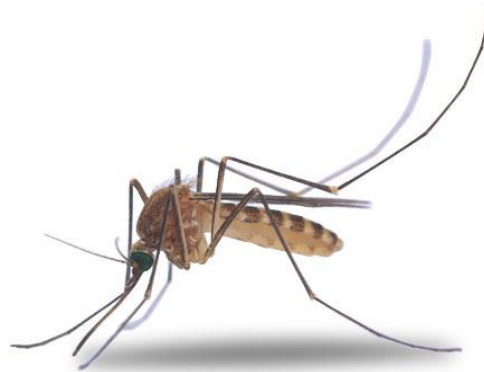
**Are you bitten by mosquitoes in your house or garden?**

**Would you like to contribute to research on British mosquitoes?**

With a recorded 33 species of mosquitoes breeding in a wide variety of habitats, from ditches and marshes to garden water butts and ponds, the watery areas in your garden could be important mosquito breeding areas.

As part of a summer long (May – July) MSc research project we aim to identify all manner of mosquito breeding sites across East Reading to map areas where mosquitoes are breeding and see how this relates to different land uses in this part of town. To achieve this, we want to find as many people as possible in the Earley, Woodley and Winnersh area (postcodes

RG6, RG5, and RG4) who have either a water butt or a pond in their garden which they suspect may be harbouring mosquito eggs, larvae or pupa.

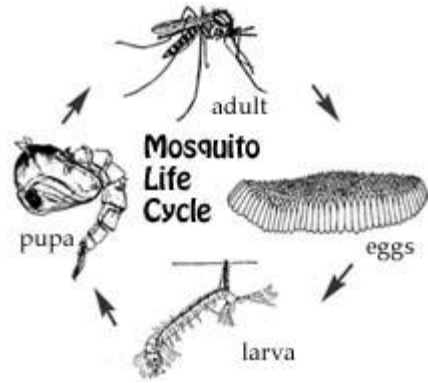
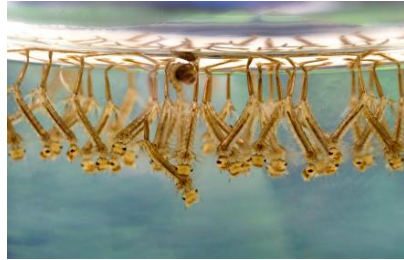


If you would like to know what is breeding in your garden, all we require is a small sample of water from your water butt or pond. We can arrange to visit your garden to collect these samples at a suitable time for you, unless you are already skilled in catching mosquitoes and can bring them onto campus. We can then identify which species you have living and breeding in your garden, let you know our findings and give you advice if you would prefer to get rid of them.

### **How to know if you have mosquitoes breeding in your garden:**

The eggs of mosquito species commonly found in gardens are laid as small (0.5 – 1.0 cm) black boats floating on the edges of the pond or container. Larvae, which develop through 4 stages, each growing in size, hang upside down from the surface of the water to breathe and will quickly wriggle away if you disturb them. A few species will lie horizontally, just under the surface of

the water. The pupae look like 3D commas and also hang from the surface, quickly zipping away if disturbed. You have to be fast to catch them.



*Culiseta* mosquito egg raft *Culex* mosquito larvae

For further information, please contact  
Susannah Townroe

[s.townroe@student.reading.ac.uk](mailto:s.townroe@student.reading.ac.uk)  
[www.reading.ac.uk/biologicalsciences](http://www.reading.ac.uk/biologicalsciences)

Address: c/o Dr A. Callaghan, Environmental Biology Section,  
School of Biological Sciences, University of Reading, Whiteknights  
Po Box 68, Reading RG6 6BX.